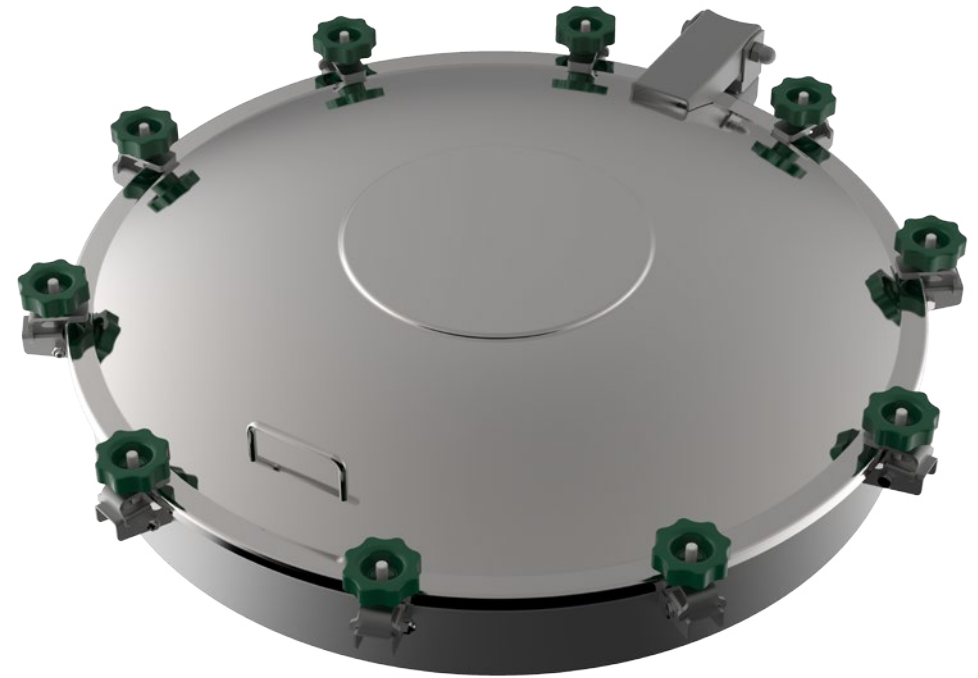
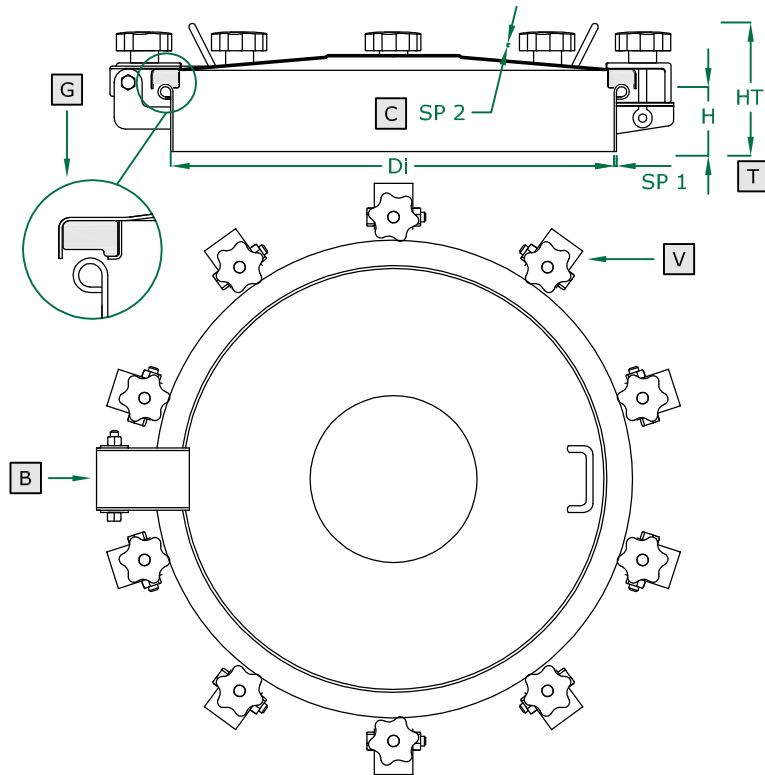


CHIUSINO CIRCOLARE

- ROUND manhole cover
- Trappe RONDE
- Tapa CIRCULAR
- RUNDE Klapptür
- КРУГЛАЯ крышка люка
- 圆形人孔盖

1070 SERIE
800/920/1020 DN
Rev 0

COPERCHIO COVER	C
TELAIO FRAME	T
BRACCIO ARM	B
VOLANTINO HANDWHEEL	V
GUARNIZIONE GASKET	G



	STANDARD		OPTIONAL			
H X SP1	100 X 2	150 X 2
TELAIO	SAT					
GUARNIZIONE	EPDM					
VOLANTINO	125 001 V NYLON	125 021 NYLON	125 022 CHROME P.	125 023 S. STEEL	125 024 ALLUMINIUM	125 031 S. STEEL
FORO	NO	33	42	48	50	...
VALVOLA	NO					

VAI ALLA PAG. Z5 / GO TO PAGE Z5

ART	DN	Di	SP2	V (nr)	HT (standard)	BAR max: (standard)	COVER type:	GASKET code:	KG (standard)
1060	800	800	1,2	10	105	0,2	CA	120 707	29,0
1061	920	920	1,2	12	111	0,2	CA	120 708	36,0
1062	1020	1020	1,2	15	112	0,2	CA	120 709	43,0